

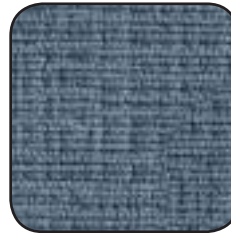


Aloha Series

Breeze
luxurious - cozy - warm
Soft, raised weave fabric



Moss



Capitol Blue



Plum



Safari



Army

Shore
restful - serenity - tranquility
Smooth soft vinyl with cracked sand pattern



Lily Pad



Pacific



Grape

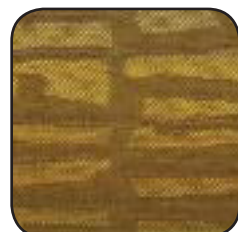


Sandstone

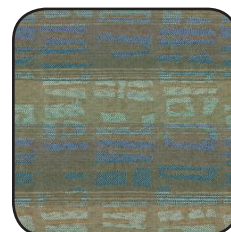


Earth

Hula
spirited - bold - fresh
Knit polynesian print throughout the fabric



Caribbean



Water Lily



Chestnut



Sunset



Chinchilla

Wave
chic - funky - hip - modern
Raised wave texture with pearlescent sheen



Sprig



Lagoon



Auburn



Pumpkin



Armadillo

Pebbles
fun - happy - energetic
Woven fabric with shiny droplet print



Aqua



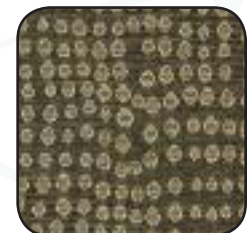
Empire



Pomegranate



Sundance



Coffee Bean



Please Note: Colors subject to change without notice.



Aloha Series

Breeze

luxurious - cozy - warm
Soft, raised weave fabric

DESCRIPTION: Chenile Woven
CONTENT: 100% Polyester
BACKING CONTENT: 100% Acrylic
ABRASION: Exceeds 125,000 Double Rubs: Contract Rated
FIRE RETARDANCY*: California Technical Bulletin 117 - Section E
UFAC Class 1 (cigarette burn) Fire Code
PILLING: ASTM D3511: Class 4.5
CLEANING INSTRUCTIONS: Machine wash with care.

Shore

restful - serenity - tranquility
Smooth soft vinyl with cracked sand pattern

DESCRIPTION: Simulated Leather Vinyl
CONTENT: 100% Polyurethane
BACKING CONTENT: 70% Polyester, 30% cotton
ABRASION: Exceeds 500,000 Double Rubs
FIRE RETARDANCY*: California Technical Bulletin 117 - Section E
NFPA 260 Fire Code Class 1, UFAC Class 1, MVSS 302
CLEANING INSTRUCTIONS: Wipe with a soft cloth, with cold water and a mild soap. Dry immediately.

Hula

spirited - bold - fresh
Knit Polynesian print throughout the fabric

DESCRIPTION: Crypton® Jacquards Woven
CONTENT: 52% Polyester, 17% Recycled Post Consumer Polyester, 31% Recycled Post Industrial Polyester
ABRASION: Exceeds 54,000 Double Rubs
FIRE RETARDANCY*: California Technical Bulletin 117 - Section E
UFAC Class 1 Fire Code
PILLING: ASTM D3511: Class 5
CLEANING INSTRUCTIONS: W-Water based Cleaners or Crypton® Cleaners.

Wave

chic - funky - hip - modern
Raised wave texture with pearlescent sheen

DESCRIPTION: Crypton® Jacquards Woven
CONTENT: 67% Polyester, 16% Recycled Post Consumer Polyester, 17% Recycled Post Industrial Polyester
ABRASION: Exceeds 54,000 Double Rubs
FIRE RETARDANCY*: California Technical Bulletin 117 - Section E
UFAC Class 1 Fire Code
PILLING: ASTM D3511: Class 5
CLEANING INSTRUCTIONS: W-Water based Cleaners or Crypton® Cleaners.

Pebbles

fun - happy - energetic
Woven fabric with shiny droplet print

DESCRIPTION: Crypton® Jacquards Woven
CONTENT: 76% Polyester, 18% Recycled Post Consumer Polyester, 6% Recycled Post Industrial Polyester
ABRASION: Exceeds 51,000 Double Rubs
FIRE RETARDANCY*: California Technical Bulletin 117 - Section E
UFAC Class 1 Fire Code
PILLING: ASTM D3511: Class 5
CLEANING INSTRUCTIONS: W-Water based Cleaners or Crypton® Cleaners.



Give your loved one or client the oasis they deserve with their very own Chill-Out Chair! No more constant sitting in wheelchairs or scooters. This great alternative seating solution allows occupants to sit safely without restraint in the most dignified and supportive position possible.



Occupants can benefit from tactile and sensory stimulation as well as calming cocooning effects.

**Cycle HARD!
Chill-Out OFTEN!**

Crypton® is engineered to provide permanent moisture, stain, odor and microbial protection. Crypton's moisture barrier is integrated into the fabric, ensuring permanent protection and making it extremely easy to clean.

*This term and any corresponding data refer to typical performance in the specific tests indicated and should not be construed to imply the behavior of this or any other material under actual fire conditions.

This information is offered for your general guidance only. It's accurate to the best of our knowledge and is not intended to relieve the user from their responsibility to investigate and understand other pertinent sources of information and to comply with all laws and procedures applicable to the safe handling and use of this material. Final determination of the suitability of any product for an application rests with the user.

